



 PALLADIUM

# INSTRUCTION



**LS8000 SERIES**

# FOR SAFETY

Followings are the safety instructions & rules. Prior to using the safe, please read the instructions carefully.

## Cautions when placing the safe.

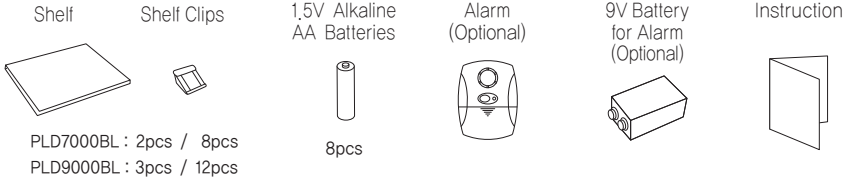
- ⊘ The safe is so heavy that it is to be handled very carefully.
  - Never move the safe in door open.
  - Be cautious not to be bumped against corners of safe.
- ⊕ To avoid dampness, place the safe on a well ventilated and flat floor.

## Cautions when using the safe.

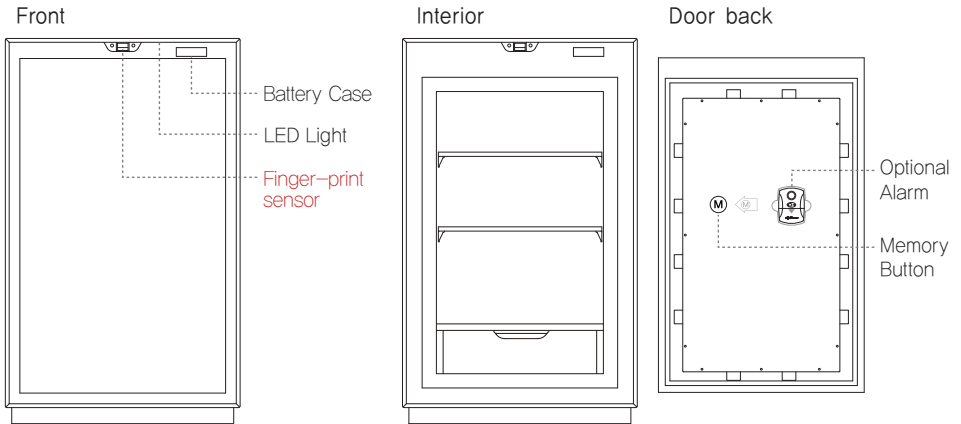
- ⊘ Be careful not to close the door roughly.
- ⊘ As a safe is heavy and operated with a smart digital lock, we recommend children not to touch it.
- ⊘ Be careful not to hurt hands or fingers when closing door.
- ⊕ In case of high dampness inside the safe, the articles may go moldy so that the desiccant must be replaced periodically.
- ⊕ This fire safe is for storing paper documents, not for data media.
  - Data media such as CDs or Diskettes are to be stored in data safes.
  - High value items such as cash or jewelries must be stored in certified security safes.
- ⊕ The articles must be apart from door inside panel.
  - Overload articles may cause some troubles when closing and opening.
  - Heavy articles are recommended to be laid on the bottom.
- ⊕ Be careful not to forget the user code, and keep the instruction outside of the safe.

# Overview

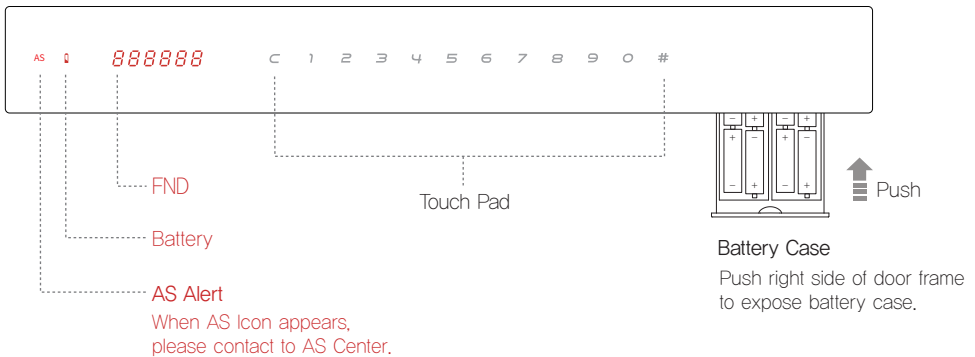
## Components



## Nomenclature



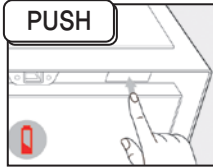
## Touch Panel



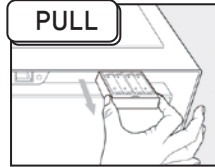
# 1. Batteries

Prior to using safe,

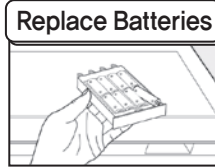
- 1) Push the front of the battery case to expose battery case.
- 2) Load batteries.




- 1) Push the front of the battery case.



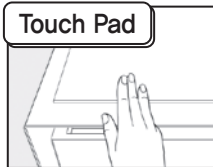
- 2) Pull out Battery Case forward.



- 3) Replace eight batteries at same time.

- \* When Battery Change Icon  or Battery Change Message (LobAtt) appears, the locking system may not work normally. A set of 8 alkaline batteries should be replaced together with the new one.
- \* Even though batteries completely exhausted, the registered codes are not erased.

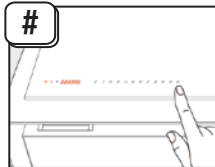
# 2. Open with Code



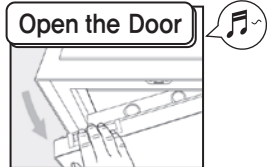
- 1) Touch **Pad**



- 2) Touch **User Code**  
(Factory Code 1 2 3 4)



- 3) Touch **#**  
(OPEnd on FND)

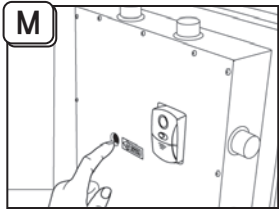


- 4) Open the door

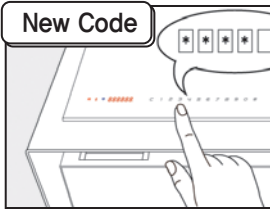
- \* **NOTE** : If a wrong code entered, "bi-ric" sound and (ErrOr) on FND.
- \* **Paralysis** : If wrong codes entered 5 times, the lock gets paralyzed 5 minutes.
  - 1) No response against pad touch.
  - 2) Paralysis Rest Time is indicated on FND as Min-Sec.  
In case of paralysis rest time 4 minutes and 29 seconds, 4\_29 indicated on FND.
  - 3) After 5 minutes, paralysis gets released.
- \* **Scramble Numbers** : When opening a safe, scramble numbers can be put **before and/or after the real code** to avoid peeps. User code should be touched consecutively. 32 numbers are acceptable including the real code.  
(Ex) In case of user code `1 2 3 4`, touch `xxx1234`, `1234xxx` or `xxx1234xxx`.

### 3. Set User Code

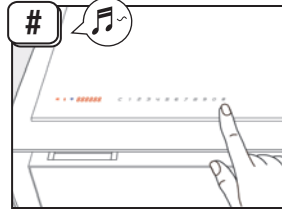
Keep door open.



1) Press **M** Button on door back.



2) Enter **New Code**  
(4 ~ 16 digits)



3) Touch **#**  
(Good on FND)

\* NOTE : 1) Prior to closing the door, please confirm with **2. Open with Code** if the **New Code** registered correctly.

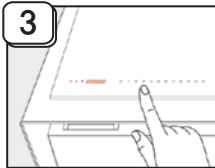
2) It is not recommended to enter the specific user code such as telephone number, birthday, consecutive number, and etc. for security reasons.

### 4. Register Finger-prints

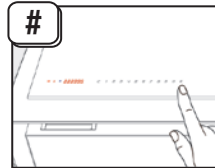
Keep door open.



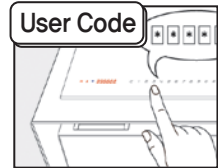
1) Press **M** Button on door back.



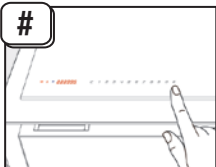
2) Touch **3**



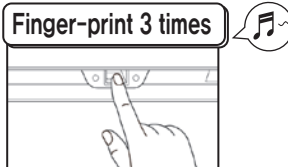
3) Touch **#**



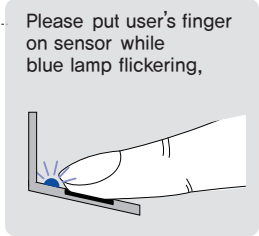
4) Touch **User Code**



5) Touch **#**  
(Blue light flickers)



6) Put **Finger-print three times** on sensor.  
(1st, 2nd, Good on FND)

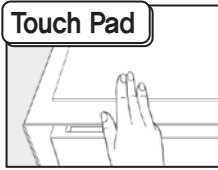


\* NOTE : 1) Prior to closing the door, please confirm with **5. Open with Finger-print** if the finger-print correctly registered.

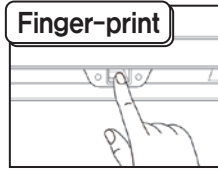
2) Worn-out finger-print can't be entered.

\* 32 finger-prints are acceptable.

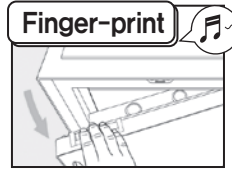
## 5. Open with Finger-print



1) Touch **Pad**



2) Put **Finger-print** on sensor ((OPEnd)on FND)



3) Open the door

\* NOTE : If a unregistered finger-print entered, "bi-bi-bi" sound and **ErrOr** on FND.

\* Paralysis : If unregistered finger-prints entered 5 times, the lock gets paralyzed 5 minutes.

1) No response against pad touch.

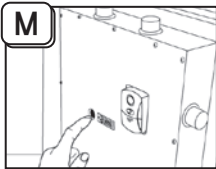
2) Paralysis Rest Time is indicated on FND as Min-Sec.

In case of paralysis rest time 4 minutes and 29 seconds, **4\_29** indicated on FND.

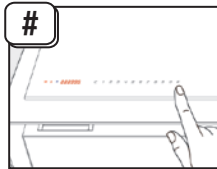
3) After 5 minutes, paralysis gets released.

## 6. Delete Finger-prints

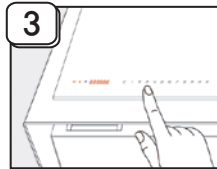
Keep door open.



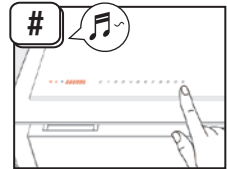
1) Press **M** Button on door back.



2) Touch **#**



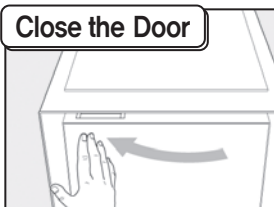
3) Touch **3**



4) Touch **#**.  
((CLEAr)on FND)

\* If one finger-print is removed, all the registered finger-prints are erased simultaneously.

## 7. Locking



Close the door. Door locks automatically. ((CLOSED)on FND)

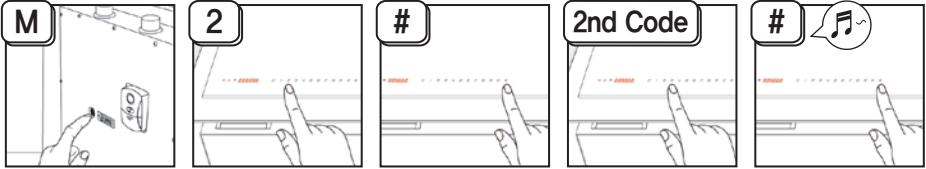
\* If door is unlocked when closed the door, **Error** sign on FND and sounding "Bi Bi Bi Bi".

\* If door opening state keeps over 90 seconds, the alarm sounds.

# 8. Multi mode

- Two users can independently open safe with each other's own user code.
- \* Multi mode and dual mode can not be used simultaneously.

## Set



- 1) Press **M** Button on door back.
- 2) Touch **2**
- 3) Touch **#**
- 4) Enter **2nd Code** (4 ~16 digits)
- 5) Touch **#** (**Good** on FND)

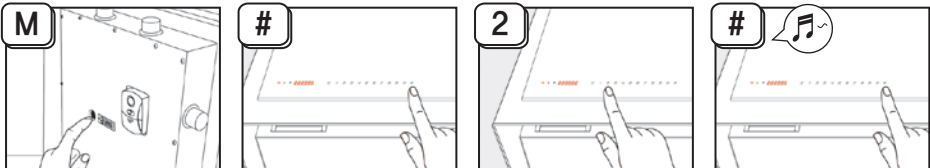
- \* NOTE : 1) 2nd user code must be different from 1st code.
- 2) Prior to closing door, confirm as shown in **8. Multi mode ▶ Open** if **2nd Code** registered correctly.
- 3) 2nd code can be changed in the same way as **8. Multi mode ▶ Set**.
- 4) For setting or changing 1st code, please do as shown in **3. Set User Code**.

## Open



- 1) Touch **Pad**
- 2) Touch **1st Code** or **2nd Code**
- 3) Touch **#** (**OPEnd** on FND)
- 4) Open the door

## Unset



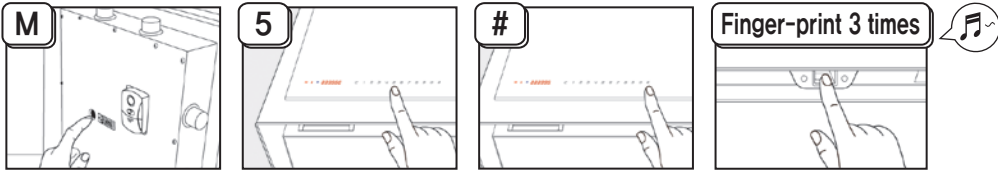
- 1) Press **M** Button on door back.
- 2) Touch **#**
- 3) Touch **2**
- 4) Touch **#** (**CLEAR** on FND)

- \* NOTE : If multi mode unsets, 2nd code is removed automatically. 1st code cannot be removed.

## 9. Dual mode (Finger-print + Code)

- Code and finger-print should be entered in a row for opening.
- \* Dual mode and multi mode can not be used simultaneously.

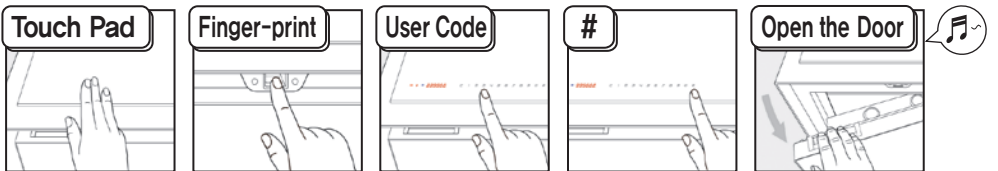
### Set



- 1) Press **M** Button on door back.
- 2) Touch **5**
- 3) Touch **#**
- 4) If there is no registered fingerprint Put **Finger-print three times** on sensor.   
 (Good on FND)

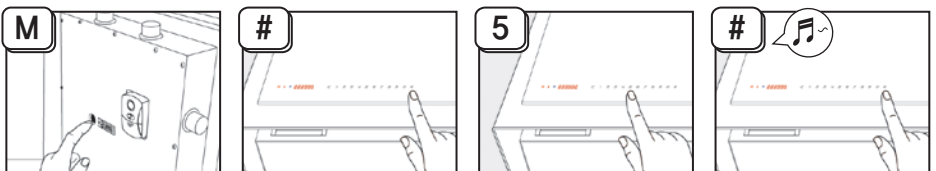
- \* NOTE : 1) Prior to closing door, confirm as shown in [9. Dual mode \(Finger-print+Code\) ▶ Open](#) if [Finger-print](#) registered correctly.  
2) Finger-print can be changed in the same way as [9. Dual mode \(Finger-print+Code\) ▶ Set](#).  
3) For setting or changing user code, please do as shown in [3. Set User Code](#).

### Open



- 1) Touch **Pad**   
 (dUAL on FND)
- 2) Put **Finger-print** on sensor
- 3) Touch **User Code**
- 4) Touch **#**   
 (OPeNd on FND)
- 5) Open the door

### Unset



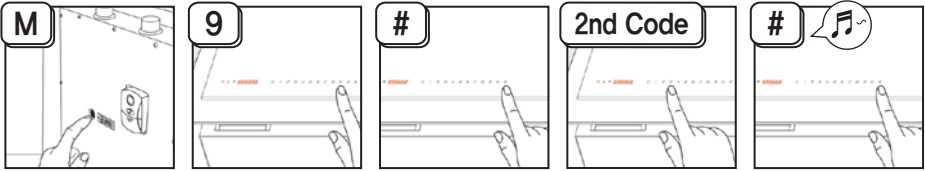
- 1) Press **M** Button on door back.
- 2) Touch **#**
- 3) Touch **5**
- 4) Touch **#**   
 (CLEAR on FND)



# 10. Dual mode (Code + Code)

- Two different codes should be entered in a row for opening.
- \* Dual mode and multi mode can not be used simultaneously.
- \* While using Dual locking function (Code + Code), finger-print function doesn't work.

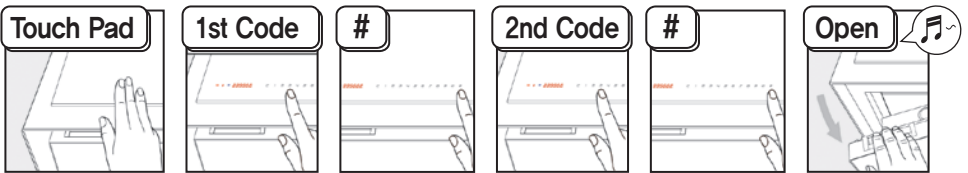
## Set



- 1) Press **M** Button on door back.
- 2) Touch **9**
- 3) Touch **#**
- 4) Enter **2nd Code** (4~16 digits)
- 5) Touch **#** (**Good** on FND)

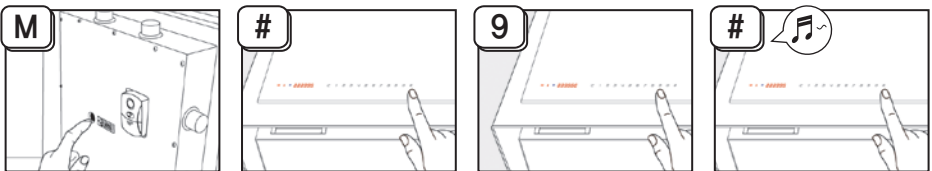
- \* **NOTE :** 1) 2nd code must be different from 1st code.
- 2) Prior to closing door, confirm as shown in [10. Dual mode \(Code+Code\) ▶ Open](#) if **2nd Code** registered correctly.
- 3) 2nd code can be changed in the same way as [10. Dual mode \(Code+Code\) ▶ Set](#).
- 4) For setting or changing 1st code, please do as shown in [3. Set User Code](#).

## Open



- 1) Touch **Pad** (**dUAL** on FND)
- 2) Touch **1st Code**
- 3) Touch **#**
- 4) Touch **2nd Code**
- 5) Touch **#** (**OPEn** on FND)
- 6) Open the door

## Unset



- 1) Press **M** Button on door back.
- 2) Touch **#**
- 3) Touch **9**
- 4) Touch **#** (**CLEAR** on FND)

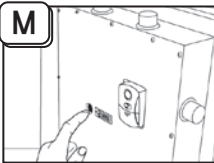
- \* **NOTE :** If dual mode unsets, 2nd code is removed automatically. 1st code cannot be removed.

# 11. Alarm Setting

- Once alarm system is affected by shock or tilt, it makes horn immediately.
- When Alarm system is set on, some impacts to the safe may cause alarm horning.
- Motion sensor may respond to all kinds of movements.

## Curfew Mode

### Set



1) Press **M** Button on door back.



2) Touch **8**

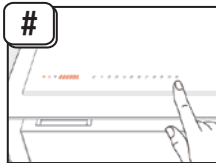


3) Touch **#**  
(Alert on FND)

### Unset



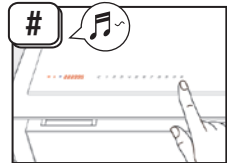
1) Press **M** Button on door back.



2) Touch **#**



3) Touch **8**



4) Touch **#**  
(CLEAR on FND)

\* Alarm is automatically released when door is opened.

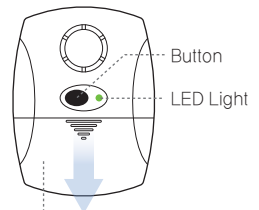
## Optional Alarm

**Installing** Place alarm loaded with 9V battery on doorback.

**Set/Unset** Press **BUTTON** (On  / Off )  
(LED turns on/off, 10 seconds required)

- \* In following cases, 9V battery must be replaced.
  - If alarm horns more than 30 minutes
  - When LED light is not bright enough

\* Battery life span : 1year (in alarm setting)



**Battery Housing Cover**  
Push down to open.

## 12. Code and Sound Hide

### Set



1) Press **M** Button  
on door back.



2) Touch **7**



3) Touch **#**  
(**Hide** on FND)

### Unset



1) Press **M** Button  
on door back.



2) Touch **#**

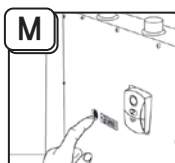


3) Touch **7**



4) Touch **#**  
(**CLEAR** on FND)

## 13. Volume Control



1) Press **M** Button  
on door back.



2) Touch **6**



3) Touch **#**



4) Touch **1~8**

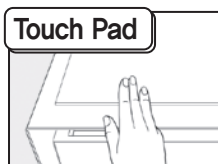


5) Touch **#**

(\*Initial Volume : Level 6)

(\*The bigger numbers, the higher volume.)

## 14. LED Light



LED turns on 15 seconds.

When touch **Pad**, LED turns on 15 seconds again.

