

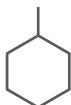


**BURTONSAFES**  
THE SURE DEFENCE

# OCULTO COMBINATION INSTRUCTIONS

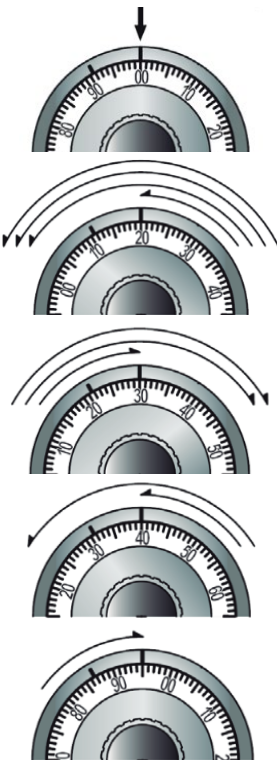


# USER INSTRUCTIONS - COMBINATION LOCKING



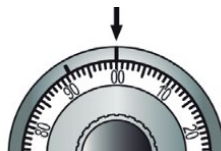
## How to open the safe

- Factory default code is 20-30-40
- Align 00 with the opening index
- Turn the dial three times anti-clockwise, and then continue until 20 lines up with the opening index
- Turn the dial twice clockwise, and then continue until 30 lines up with the opening index
- Turn the dial once anti-clockwise, and then continue until 40 lines up with the opening index
- Turn the dial clockwise until you reach the opening position
- Turn the door clockwise and pull it up



## How to close the safe

- Turn the door anti-clockwise to close
- Turn the dial three times anti-clockwise to 00





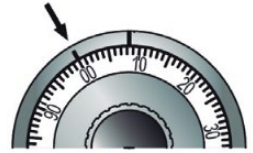
## How to change the code

When changing your code, you should never use a number inbetween 0 and 10 for any of the digits, and never use a number lower than 20 as the last digit.

We recommend your chosen 3-digit code is in the order of low to high, i.e. 15-25-40.

- Follow the instructions to open the safe door, leave the door open

- Align 00 with the changing index



- Turn the dial three times anti-clockwise, and then continue until the first digit of your current code lines up with the changing index, i.e. 20



- Turn the dial twice clockwise, and then continue until the second digit of your current code lines up with the changing index, i.e. 30



- Turn the dial once anti-clockwise, and then continue until the last digit of your current code lines up with the changing index, i.e. 40

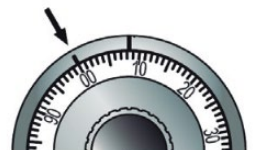


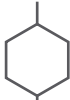
- Take the changing tool included and place it in the hole behind the door



- Turn the tool clockwise until it stops. Do not force the tool

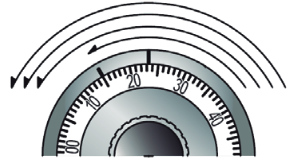
- Align 00 with the changing index





## How to change the code

- Turn the dial three times anti-clockwise, and then continue until the first digit of your new code lines up with the changing index, i.e. 15
- Turn the dial twice clockwise, and then continue until the second digit of your new code lines up with the changing index, i.e. 25
- Turn the dial once anti-clockwise, and then continue until the last digit of your new code lines up with the changing index, i.e. 40
- Turn the tool anti-clockwise until it stops, remove the tool
- Your new code is now set

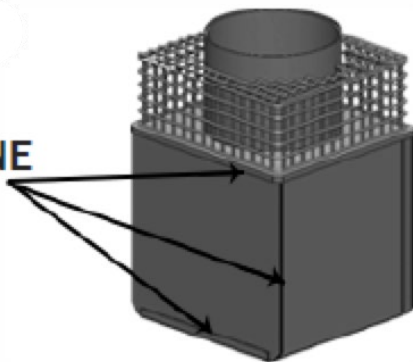


**NOTE:** If you turn past a number you meant to stop on, you cannot turn back to it. You must start the whole process from the beginning. This is for both opening your safe and changing your code

## You Will Need:

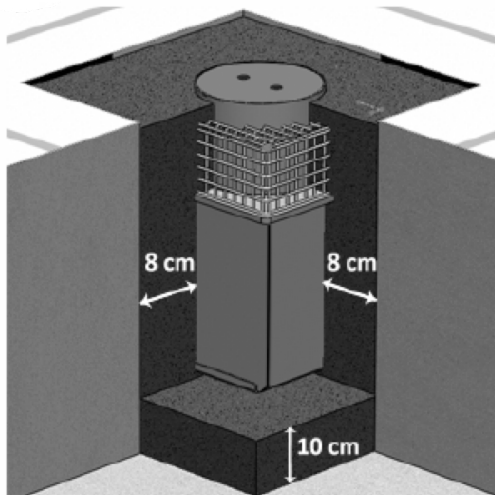
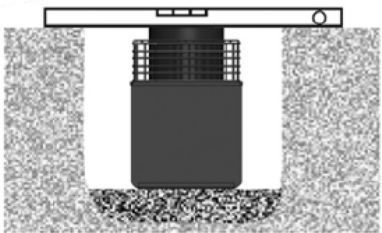
- Waterproof Membrane
- Clear Silicone
- Silica Gel Bag
- Concrete Mix:
  - 2kg Portland cement
  - 4kg Aggregate
  - 3kg Sand
  - 7kg Metal Fibres

**SILICONE**



Burton Safes can supply a full installation kit for your safe which includes all of the items shown above. Why not ask your supplying stockist for further details?

- Remove the lid and then take the door out of the safe
- Apply silicone to all the external joints of the safe, allow 24 hours for this to set
- Prepare the hole in the floor for your safe. Leave at least 8cm clearance around the safe and 10cm below
- Mix your concrete using the ingredients listed above and in line with the cement manufacturers instructions
- Spread 10cm of your concrete mix in the bottom of the hole
- Wrap your safe in the waterproof membrane and position inside the hole
- Spread the rest of the concrete around the safe to ground level
- Once set, cut down the membrane so it is level with the floor
- Do not use your safe until 15 days have passed to ensure all moisture has released from the concrete mix
- Place a silica bag inside of your safe



# BURTONSAFES

THE SURE DEFENCE®



## PRODUCT WARRANTY

Thank you for choosing Burton Safes.

Your new product carries a 2 year parts and labour warranty in respect of defects in materials and workmanship when registered on our website [www.burtonsafes.co.uk/warranty](http://www.burtonsafes.co.uk/warranty) or confirmed over the phone **+44 (0) 1484 663388**. Please also look out for the extended warranty and Safe for Longer stamps on the website or in our brochure.



5 Year extended warranty - At Burton Safes we are so confident in our products that we provide a 5 year extended warranty on all our Home Series safes for home consumers. Please register using the above details.



Safe for Longer - With all Safe for Longer stamped safes we provide a 5 year warranty and a **FREE REPLACEMENT\*** if your product is damaged during **BURGLARY** or **FIRE** for the life of the warranty. Please register using the above details.

\*T's & Cs apply, visit our website for full details.



Version 1  
September  
2020

Burton Safes Ltd  
Brockholes Business Park  
Rock Mill Road, Brockholes  
Holmfirth, HD9 7BN

[www.burtonsafes.co.uk](http://www.burtonsafes.co.uk)  
[enquiries@burtonsafes.co.uk](mailto:enquiries@burtonsafes.co.uk)  
+44 (0) 1484 663388

