



PRIMOR

Flexible in equipment and application.

Carl Wittkopp GmbH
Konrad-Zuse-Straße 5
42551 Velbert
Germany

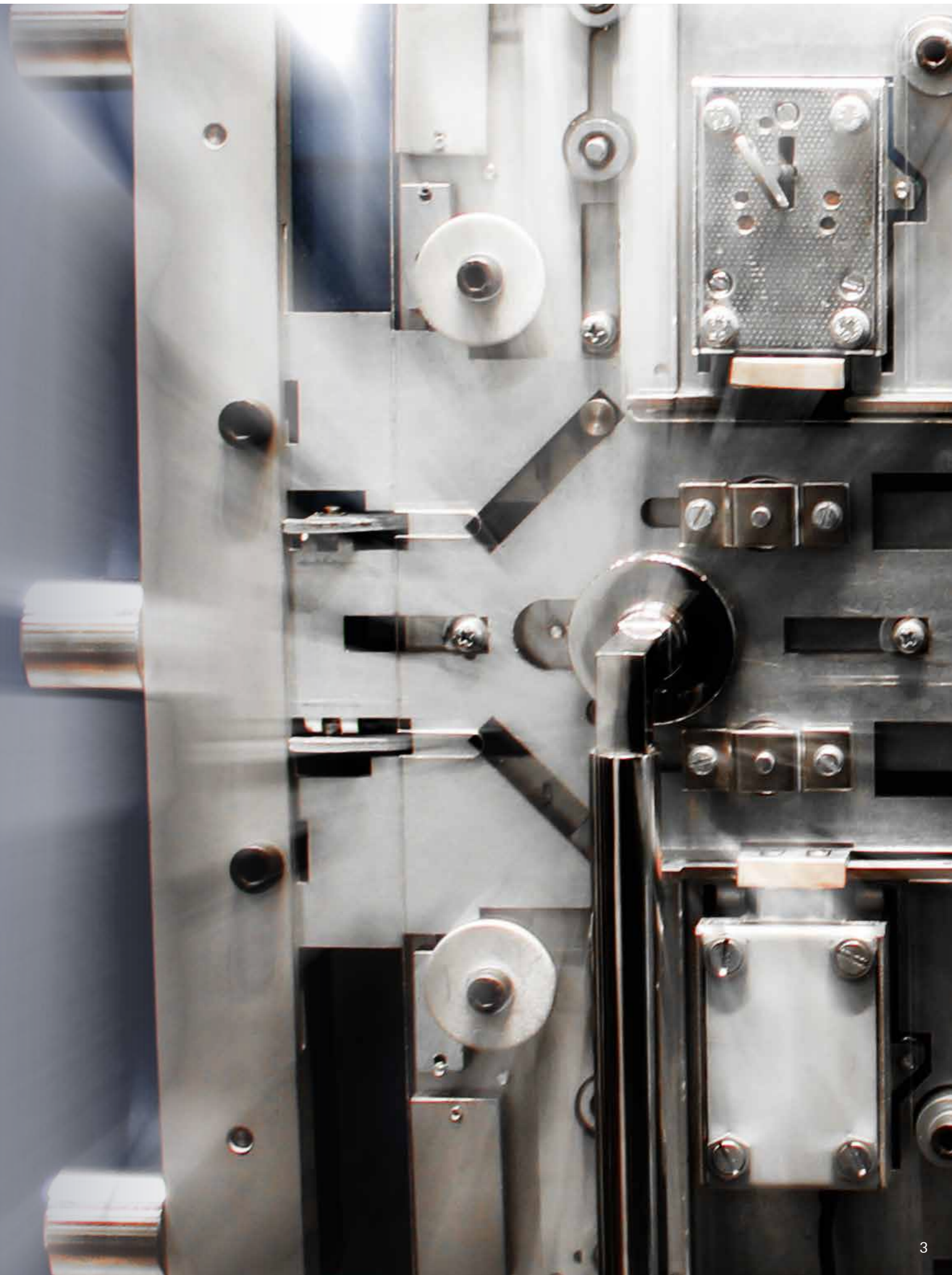
Telephone +49(0)2051 9566 0
Telefax +49(0)2051 9566 66
info@carl-wittkopp.com
www.carl-wittkopp.com

Wittkopp is member of ESSA, EHI and VfS
Certified by DIN EN ISO 9001



PRIMOR

PRIMOR series	5
Standards	8
Functions	10
Lock: PRIMOR 100	12
Lock: PRIMOR 1000	15
Lock: PRIMOR 2000	16
Lock: PRIMOR 3000	17
Lock: PRIMOR 3010 / 3011 - emergency lock 1821	18
Lock: PRIMOR 3100	21
Keypad: PRIMOR FS-M	22
Keypad: PRIMOR FL	23
Keypad: PRIMOR RE	24
Keypad: PRIMOR RO	25
Accessories	27
System overview	28
Article overview	30
Technical documentation	32



You got the choice.

WITTKOPP offers the possibility with the PRIMOR series to combine 5 high-quality electronic locks, 4 shapely keypads and 3 perfected software levels flexibly. Assort the version that conforms to your requirements.

No matter what version you choose, all locks within the series offer highest security and all keypads convince with their concise appearance.

Something for every safe.

Very clever

If the PRIMOR 100 is installed with extension latch and bolt ledge, the locking happens on the side, on the top and bottom simultaneously. Due to the lock cover also being the lock fixing plate, the lock is either welded or screwed onto the door. A boltwork can be saved.

Simply quick

When opening the PRIMOR 1000 starts a chain reaction by turning the door handle. The handle moves the boltwork, which moves the bolt aside and then the safe is open.

Classically good

Turning the keypad opens the PRIMOR 2000. Lock and keypad are linked by a spindle. The position of the keypad immediately shows if the lock is opened.

It doesn't get more comfortable

The bolt of the PRIMOR 3000 opens and closes motor-driven. If the boltwork should lock up, the spring-loaded bolt prevents damaging of the lock. The mechanical emergency lock of the PRIMOR 3010 / 3011 offers help when the electronic lock cannot be opened anymore, e.g. when the code was forgotten. The key mechanically overwrites the electronic lock and the lock opens.

Practically solved

When closing the safe door, the latch bolt of the PRIMOR 3100 snaps and keeps the door closed.



The common denominator.

All certified locks within the PRIMOR series

- are EN 1300 B, VdS Class 2, ECBS and IMP class B certified
- are suited for safes of EN 1143-1 grade 0 – V
- can be used for all 4 mounting positions right-hand, left-hand, up and down
- got standard fixing points
- got a stroke of 12 mm
- are power supplied by a 9-volt block battery
- are consistently programmed and operated via keypad



The small difference.

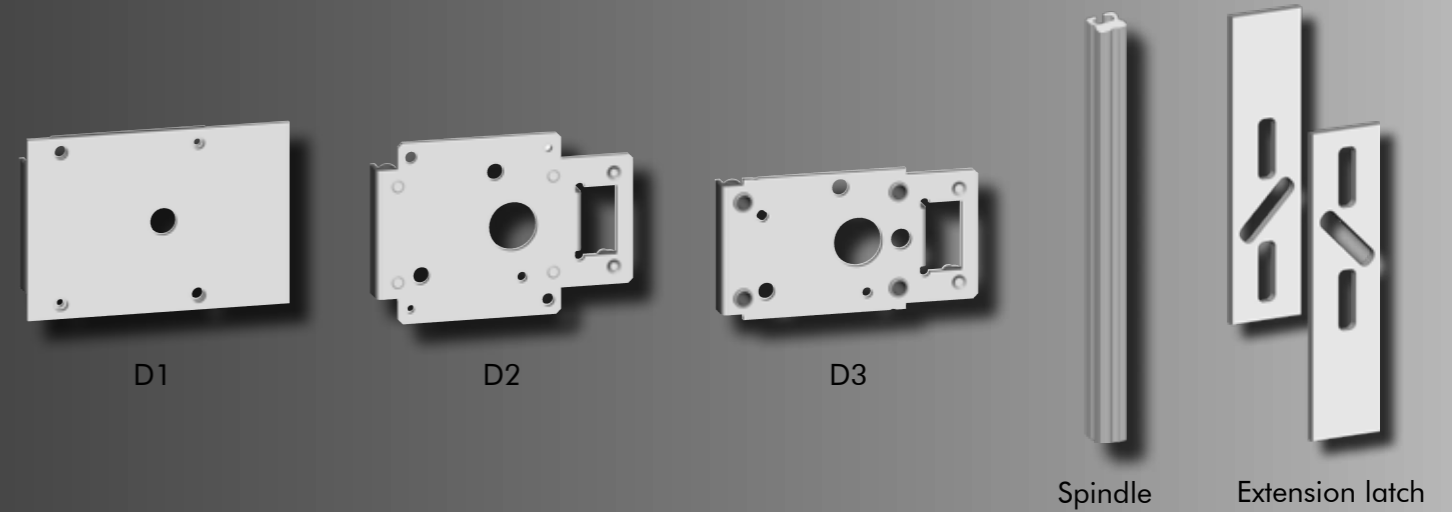
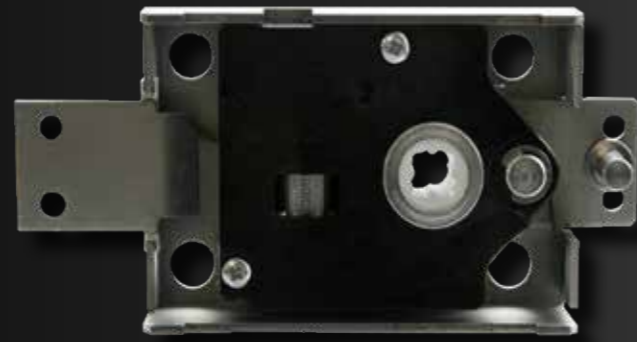
Codes / Functions	PRIMOR 100	PRIMOR 1000 - 3100		
		Level 5	Level 15	Level 25
User codes	9	1	9	9
Master codes	1	1	1	1
Instant opening code	•		•	•
Operation blocking	•		•	
Manipulation blocking	•	•	•	•
Dual verification code				•
Time delay (1 - 99 min)	•	•	•	•
Opening window (1 - 19 min)	•	•	•	•
Silent alarm*			•	•
External release / blocking*			•	•
Audit – without dates and time**			100	100
Battery control	•	•	•	•

* In combination with extension box PrimorSignal

** In combination with PrimorAudit set



PRIMOR 100



The way you like it.

Characteristics

- The lock offers closing and locking mechanism in one. When using extension latch and bolt ledge (not included in scope of delivery) the locking snaps in the side, on the top and bottom, therefore a boltwork is not needed
- 3 lock covers offer alternative solutions for fixing the lock
- Opening and closing happens by manually turning the entire keypad or the lever

Technical data	Lock basis
Bolt	flat bolt
Bolt movement	manually by turning keypad / lever
Lock case / bolt	steel, galvanised



PRIMOR RE



PRIMOR RO

Characteristics

- Lock cover D1
 - Lock cover simultaneously serves as fixing plate. Together with the integrated anti-drilling plate, it is welded onto the door
 - Lock basis is screwed onto the welded lock cover
- Lock cover D2
 - Lock cover simultaneously serves as fixing plate. It is welded onto the door
 - Lock basis is screwed onto the welded lock cover
- Lock cover D3
 - Lock cover and basis are screwed onto the door together
- Spindle
 - Suited for drillings with a minimum of $\varnothing 10.6$ mm
- Extension latch
 - Locking that simultaneously snaps on top and bottom

Technical data	Fixing	Material
D1 - fixing / anti-drilling plate	weld-on	steel / hardened manganese steel
D2 - fixing plate	weld-on	steel
D3 - fixing plate	screw-on	steel
Spindle $\square 8$ mm		aluminum
Extension latch 142 mm	insertable	steel



PRIMOR 100



PRIMOR 1000

Sweepingly opened.

Characteristics

- Opening and closing of the lock happens by moving the boltwork via the safe handle
The boltwork pushes the spring-loaded swing bolt of the lock aside (= lock opened) or lets it spring back (= lock closed)
- The bolt is suited for left-hand or right-hand operation

Technical data

Bolt	swing bolt
Bolt movement	manually by operating the boltwork
Lock case / bolt	die-cast zinc / steel



PRIMOR FS-M



PRIMOR FL



PRIMOR RO

PRIMOR 2000



PRIMOR 3000



Closed in no time.

Characteristics

- Opening and closing of the lock happens by manually turning the entire keypad or the lever
- Spindle is suited for drillings with a minimum of Ø 10.6 mm (square spindle) or of Ø 9 mm (round spindle)

Technical data

Bolt	dead bolt with 2 threaded holes M4
Bolt movement	manually by turning keypad / lever
Lock case / bolt	die-cast zinc
Spindle	aluminum, □ 8 mm or Ø 9 mm



PRIMOR RE



PRIMOR RO

The motor is running.

Characteristics

- Opening and closing of the lock happens by motor-driven bolt movement
- During the closing, the spring-loaded bolt prevents a damaging of the bolt due to a blockage. Because of this overload protection, the use of a boltwork switch becomes unnecessary

Technical data

Bolt	spring-loaded dead bolt with 2 threaded holes M4
Bolt movement	motor-driven / 2.5 N
Lock case / bolt	steel / die-cast zinc



PRIMOR FS-M



PRIMOR FL



PRIMOR RO



Play it safe.

Characteristics

- Opening and closing of the lock happens by motor-driven bolt movement
- During the closing, the spring-loaded bolt prevents a damaging of the bolt due to a blockage. Because of this overload protection, the use of a boltwork switch becomes unnecessary
- Electronic lock is linked to the mechanical emergency lock by a short or long unlocking lever. In case of an emergency, the bolt of the electronic lock is pulled backwards by opening the mechanical lock

Technical data	Electronic lock
Bolt	spring-loaded dead bolt with 2 threaded holes M4
Bolt movement / bolt force	motor-driven / 2.5 N
Unlocking lever*	PRIMOR 3010: short PRIMOR 3011: long
Lock case / bolt	steel / die-cast zinc

* see technical documentation p. 35 / 36

Technical data	Emergency lock
Levers	11
2 double-bit keys	die-cast zinc, 135 mm
Lock case	steel, chromatised



PRIMOR FS-M



PRIMOR FL



PRIMOR RO

PRIMOR 3010 / 3011 - EMERGENCY LOCK 1821

Cleverly hidden.

If burglars see a safe with a key hole, they often search and wreck apartments or offices in search for the fitting key.

When positioning the keypad PRIMOR FS / FS-M directly above the key hole of the emergency lock, it is not obvious the safe can be opened with a key. The danger of vandalism by the search for a key is significantly reduced.



PRIMOR 3100

Snap back.

Characteristics

- Opening the lock is done by motor-driven pulling back of the latch
- When closing the safe door, the spring-loaded latch snaps back into the closing plate and keeps the door shut
- The PRIMOR 3100 is not certifiable because of the latch bolt
- Application ranges from night safes to inner safe compartments

Technical data

Bolt	spring-loaded latch bolt
Bolt movement	motor-driven / 2.5 N
Lock case / bolt	steel, galvanised



PRIMOR FS-M



PRIMOR FL



PRIMOR RO

PRIMOR FS-M



PRIMOR FL



Magnetically attracting.

Characteristics

- Shapely keypad in 3 different surface materials available
- Keypad cover is comfortably closed with magnet
- Indelible marking of the keypad mat with tactile feedback resists a lot of stress
- Battery accessible from the outside allows quick battery change

Technical data

Material	die-cast zinc
Surface material	<ul style="list-style-type: none"> • satin chromed • gloss chromed • golden
Keypad / keypad fastening	keypad mat, black / magnet
Depth / rake	49 mm / 15°
Battery compartment	integrated



PRIMOR 1000



PRIMOR 3000 - 3011



PRIMOR 3100

The round must go into the square.

Characteristics

- Keypad has low construction height and can be fitted evenly onto the safe door
- Because the battery is inside of the safe, there is a possibility for emergency openings from the outside
- Indelible marking of the keypad mat with tactile feedback resists a lot of stress

Technical data

Material	die-cast zinc, satin chromed
Keypad	keypad mat, black
Separate battery compartment	PRIMOR 1000: Battery compartment or battery slide-in compartment * PRIMOR 3000 - 3100: Battery slide-in compartment*

* battery slide-in compartment to be ordered separately



PRIMOR 1000



PRIMOR 3000 - 3011



PRIMOR 3100

PRIMOR RE



PRIMOR RO



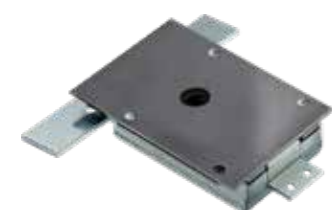
Set all levers into motion.

Characteristics

- Indelible marking of the keypad mat with tactile feedback resists a lot of stress
- Battery accessible from the outside allows quick battery change
- When using on light safes, the keypad can serve as a handle

Technical data

Material	synthetic material, black
Keypad	keypad mat, black
Battery compartment	integrated



PRIMOR 100



PRIMOR 2000

It will turn your head.

Characteristics

- The standard keypad is rotatable. With a clip, however, it can be fixed to avoid rotation
- The membrane keypad convinces with longevity and highest possible protection against wear
- Battery accessible from the outside allows quick battery change
- When using on light safes, the keypad can serve as a handle

Technical data

Material	synthetic material, black
Keypad	membrane keypad • chromated ring • ring black
Battery compartment	integrated



PRIMOR 100



PRIMOR 1000



PRIMOR 2000



PRIMOR 3000 - 3011



PRIMOR 3100



Get your grip on it.

When the keypad PRIMOR RO is used with the locks PRIMOR 1000 / 3000 - 3100 it is fixed with a clip, therefore a spindle is not needed for operating the lock. The spindle can, however, be used as boltwork actuator within light safes, which means the keypad serves as safe handle.

The spindle is suited for a \square 8 mm nut of a boltwork. The keypad is turnable for a maximum of 60°. The stroke varies in dependence of the rotation.

There is something else.

Signal box PrimorSignal

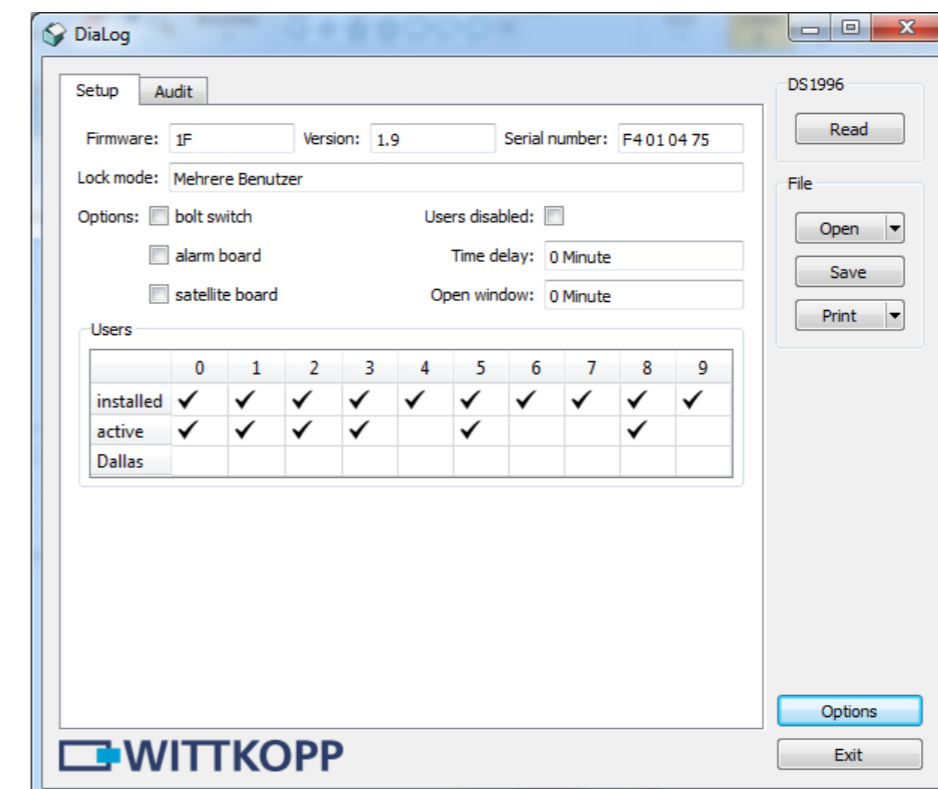
The signal box exchanges signals between the lock and a superior control system. If, for example, the code for a silent alarm is entered into the lock, this alarm signal is transferred via the box to the burglar alarm system.

- Controlling of signals "release switch" and "silent alarm"
- Signal transfer via dry contacts
- Power supply via 9-volt block battery






Set PrimorAudit

With the Audit set there is the possibility to read out the events of the safe. That way it can be, for example, retraced which user last opened the lock.

- Data transfer between keypad and PC via iButton
- Reading out up to 100 events without date and time



Keep the overview.

	Certification	Bolt	Bolt movement	PRIMOR FS-M	PRIMOR FL	PRIMOR RE	PRIMOR RO
 PRIMOR 100	<ul style="list-style-type: none"> • EN 1300 B • VdS Class 2 • IMP Class B • ECB•S 	flat bolt	manually			•	•
 PRIMOR 1000	<ul style="list-style-type: none"> • EN 1300 B • VdS Class 2 • IMP Class B • ECB•S 	swing bolt spring-loaded	manually	•	•		•
 PRIMOR 2000	<ul style="list-style-type: none"> • EN 1300 B • VdS Class 2 • IMP Class B • ECB•S 	deadbolt	manually			•	•
 PRIMOR 3000 / 3010 / 3011	<ul style="list-style-type: none"> • EN 1300 B • VdS Class 2 • IMP Class B • ECB•S 	deadbolt spring-loaded	motor-driven	•	•		•
 PRIMOR 3100		latch bolt spring-loaded	motor-driven	•	•		•



PRIMOR FS-M



PRIMOR FL



PRIMOR RE



PRIMOR RO

Do you want more?

Article number	Lock		
P-100-01-00	PRIMOR 100		
P-1000-01-00		Level 5	
P-1000-00-00	PRIMOR 1000	Level 15	
P-1000-02-00		Level 25	
P-2000-01-00		Level 5	
P-2000-00-00	PRIMOR 2000	Level 15	
P-2000-02-00		Level 25	
P-3000-01-02		Level 5	
P-3000-00-02	PRIMOR 3000	Level 15	
P-3000-02-02		Level 25	
P-3010-01-02		Level 5	
P-3010-00-02	PRIMOR 3010	Level 15	
P-3010-02-02		Level 25	
P-3011-01-02		Level 5	
P-3011-00-02	PRIMOR 3011	Level 15	
P-3011-02-02		Level 25	
P-3100-01-02		Level 5	
P-3100-00-02	PRIMOR 3100	Level 15	
P-3100-02-02		Level 25	
N-1821-0135-ZD	Emergency lock 1821		

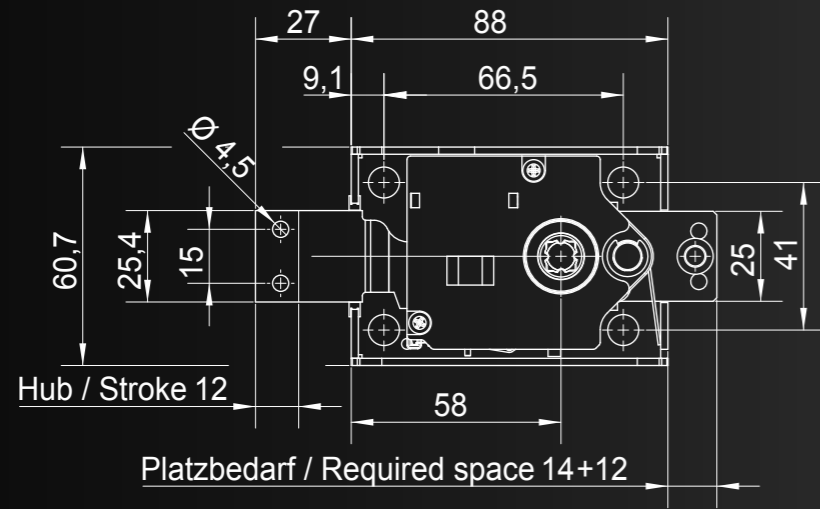
Article number	Keypad		Suitable for
P-FS-M-00-00-0-00		gloss chromed	
P-FS-M-00-00-1-00	PRIMOR FS-M	satın chromed	PRIMOR 1000 / 3000 - 3100
P-FS-M-00-00-2-00		golden	

Article number	Keypad		Suitable for
P-FL-00-00-0-00		with battery compartment	PRIMOR 1000
P-FL-00-03-0-00	PRIMOR FL	without battery compartment or battery slide-in compartment (to be ordered separately)	PRIMOR 1000 / 3000 - 3100
P-RE-00-00-0-00	PRIMOR RE		PRIMOR 100 / 2000
P-RO-00-01-1-00	PRIMOR RO	ring chromated	
P-RO-00-01-0-00		ring black	PRIMOR 100 - 3100

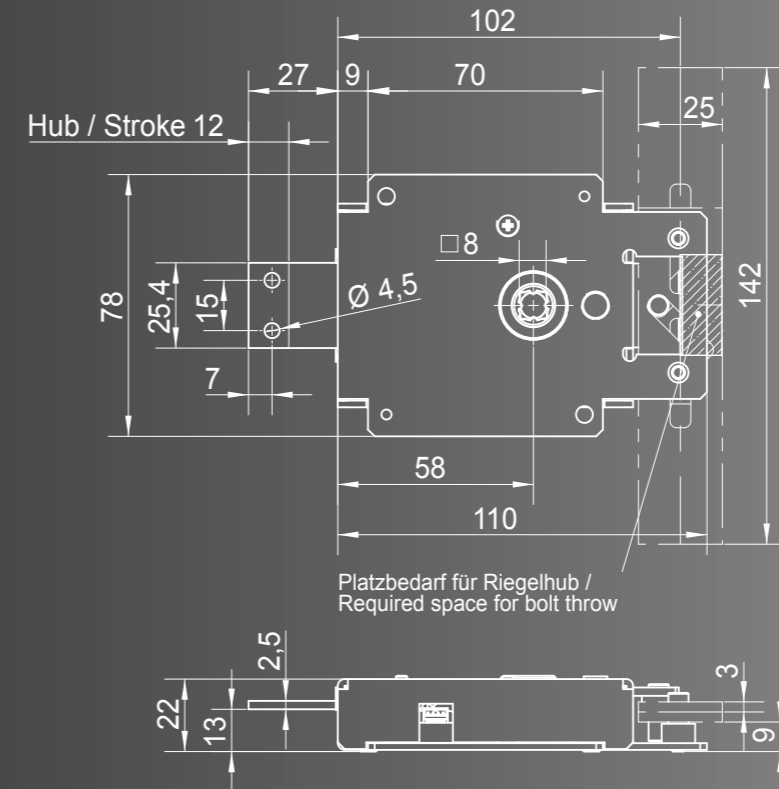
Article number	Options / Accessories		Suitable for
P-100-30-00	Lock cover D1		
P-100-20-00	Lock cover D2		
P-100-10-00	Lock cover D3		PRIMOR 100
P-100-50-00	Extension latch, 142 mm		
Z-002	Spindle square, 51 mm		
Z-003	Spindle square, 160 mm		
Z-004	Spindle square, 240 mm		
Z-005	Spindle square, 1,000 mm		PRIMOR 100 / 2000
Z-006	Spindle round, 51 mm		
Z-007	Spindle round, 160 mm		
BAT-MM-0460	Battery slide-in compartment: Molex connector, 460 mm		PRIMOR 3000 - 3100
BAT-MM-1500	Battery slide-in compartment: Molex connector, 1,500 mm		PRIMOR 3000 - 3100
BAT-MP-0460	Battery slide-in compartment: Molex- / pin connector, 460 mm		PRIMOR 1000
BAT-MP-1000	Battery slide-in compartment: Molex- / pin connector, 1,000 mm		PRIMOR 1000
P-SIGNAL	PrimorSignal: signal box		
P-AUDIT	AuditSet: software, iButton reader, iButton, USB- / y-adapter		

TECHNICAL DOCUMENTATION

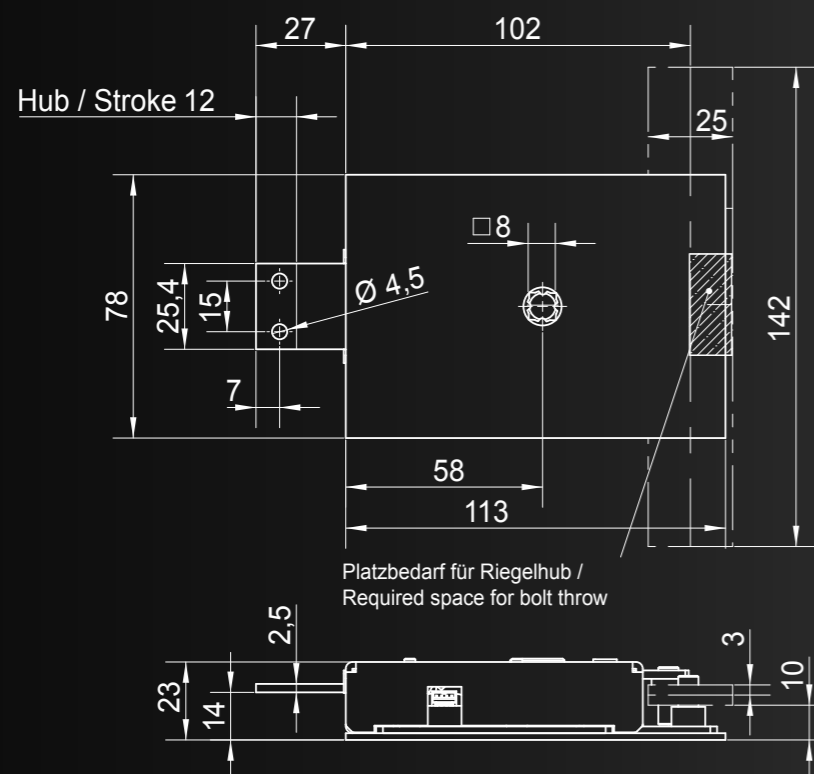
PRIMOR 100



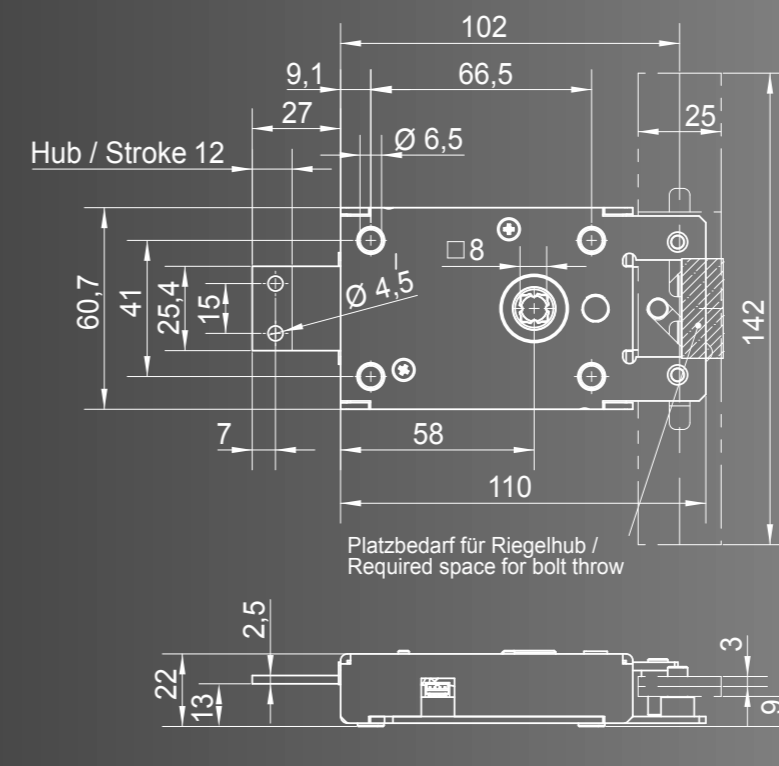
Lock cover D2



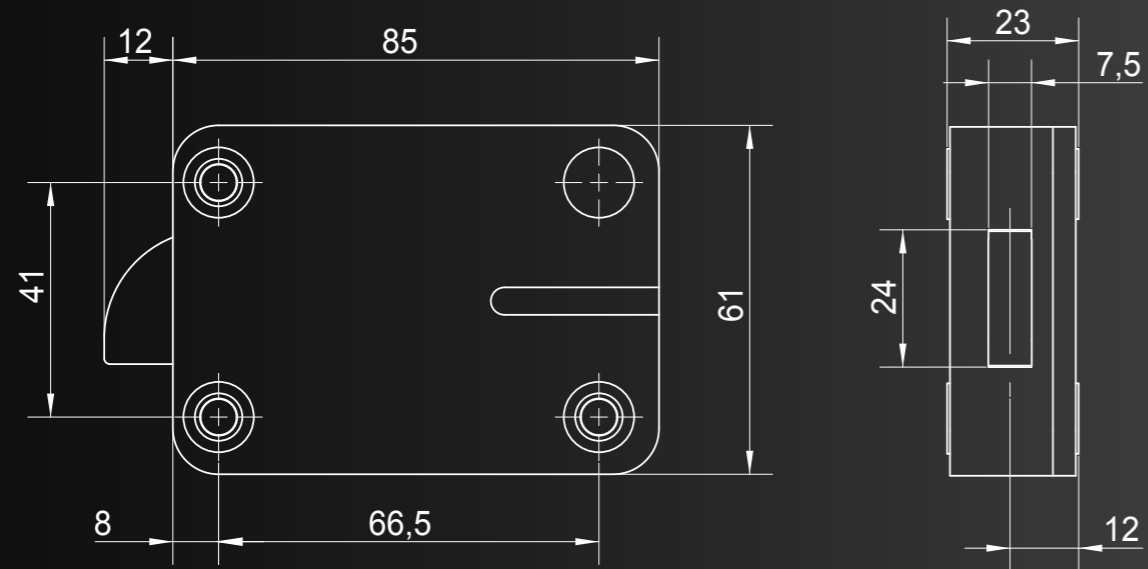
Lock cover D1



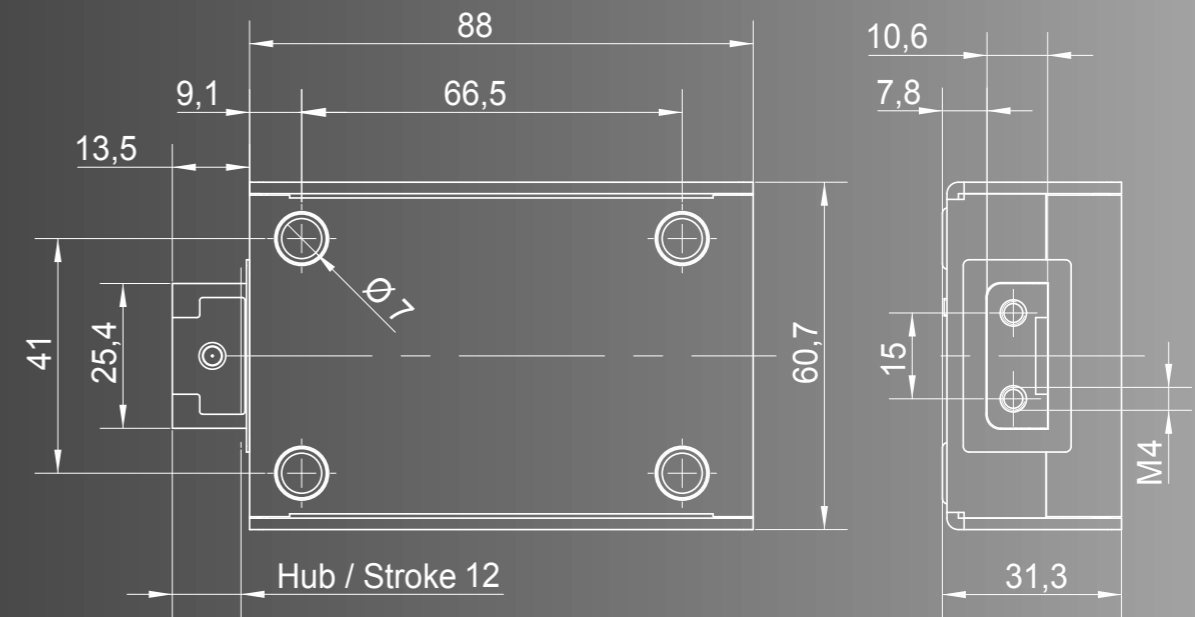
Lock cover D3



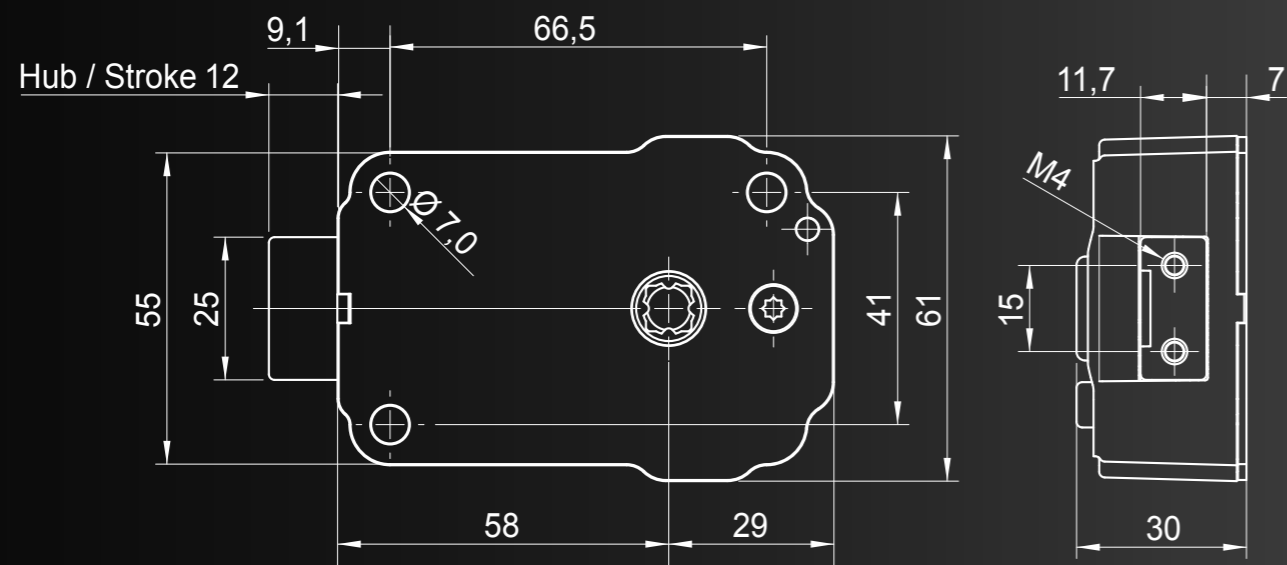
PRIMOR 1000



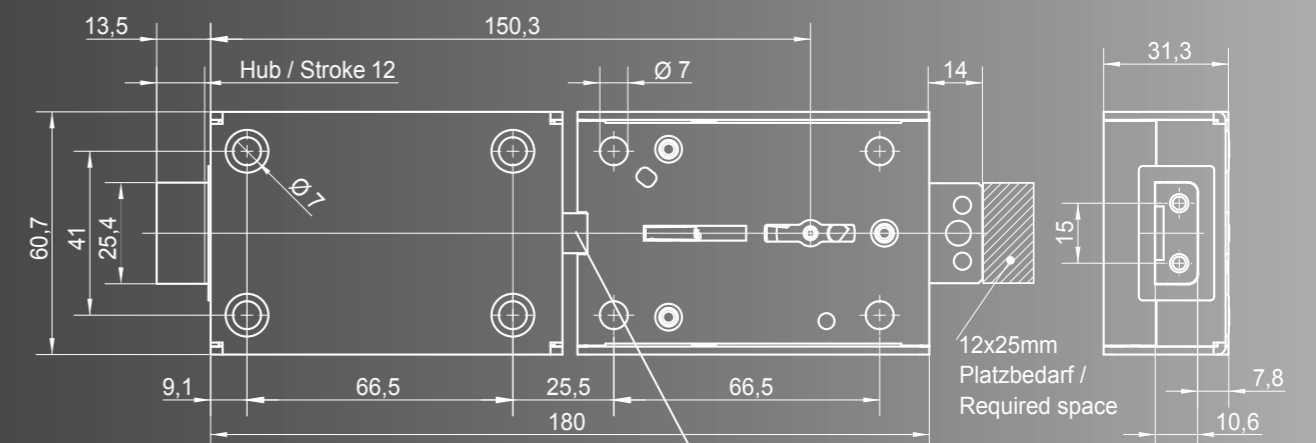
PRIMOR 3000



PRIMOR 2000

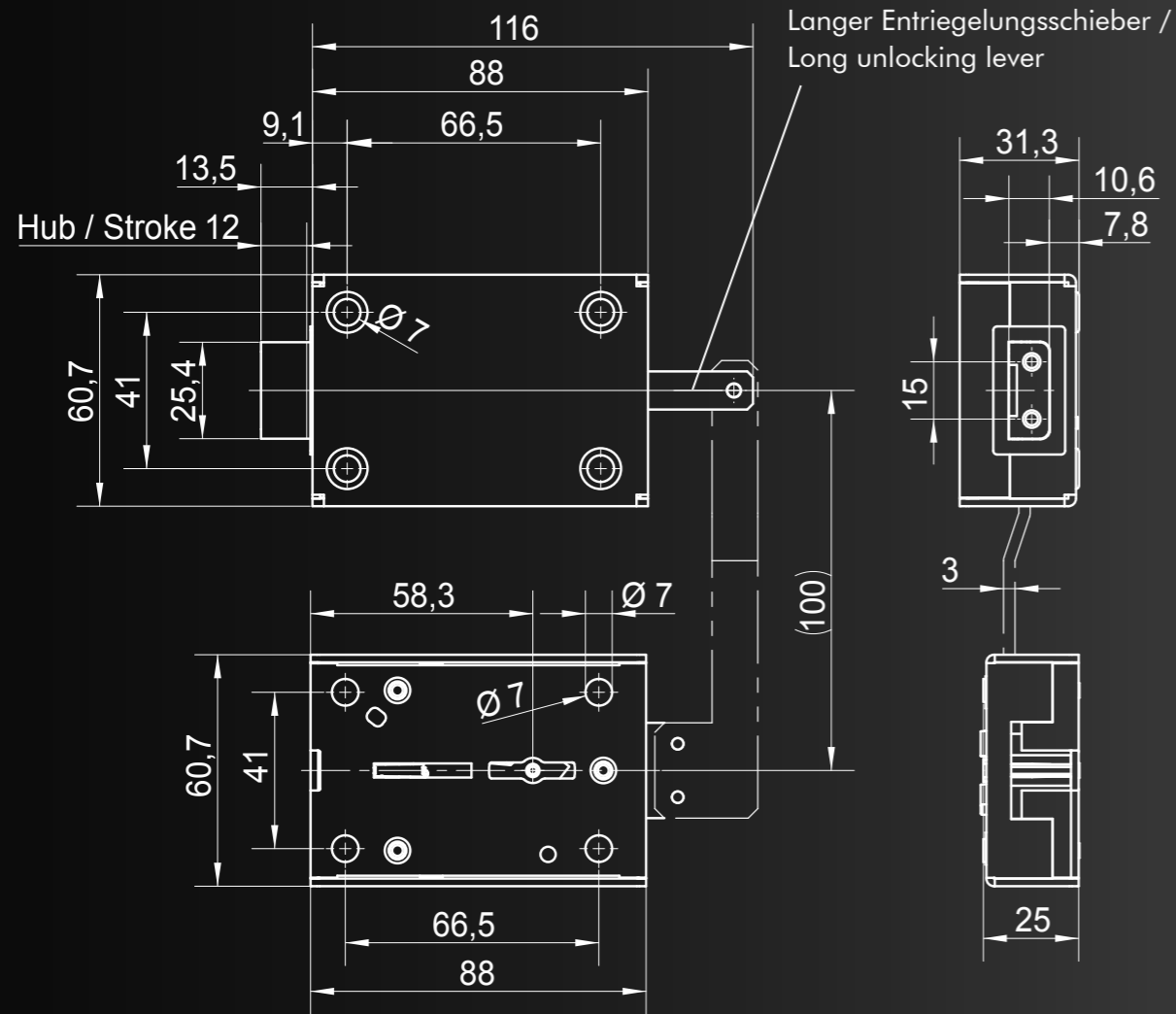


PRIMOR 3010 / Emergency lock 1821

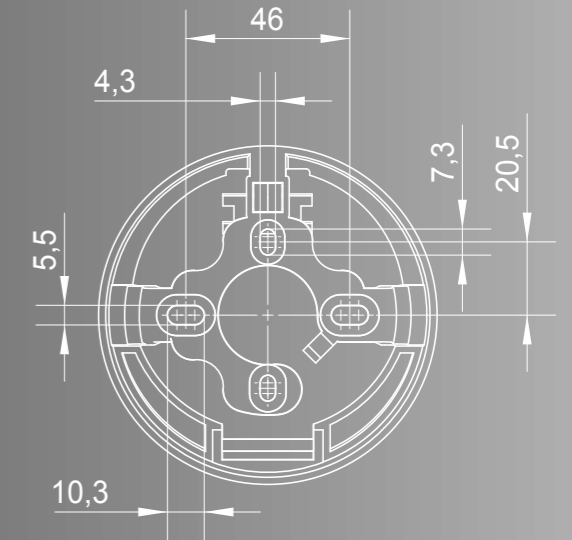
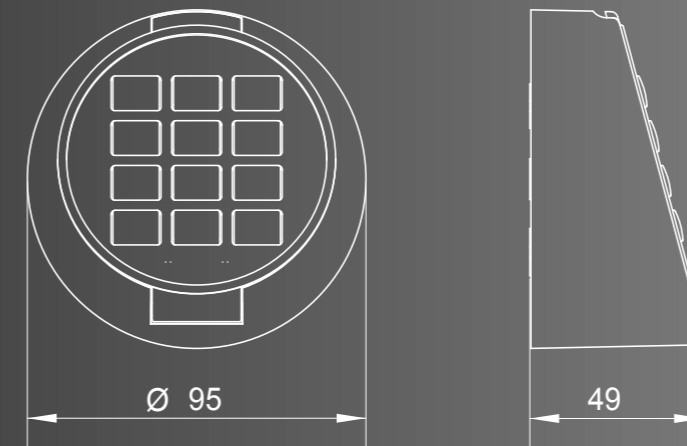


Kurzer Entriegelungsschieber / Short unlocking lever

PRIMOR 3011 / Emergency lock 1821

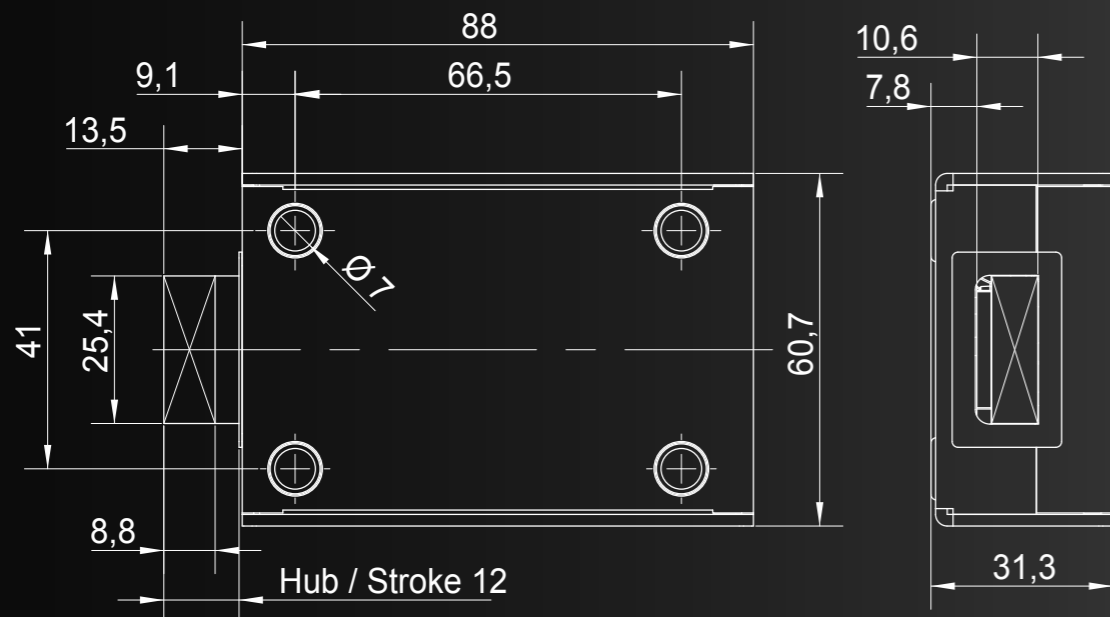


PRIMOR FS-M

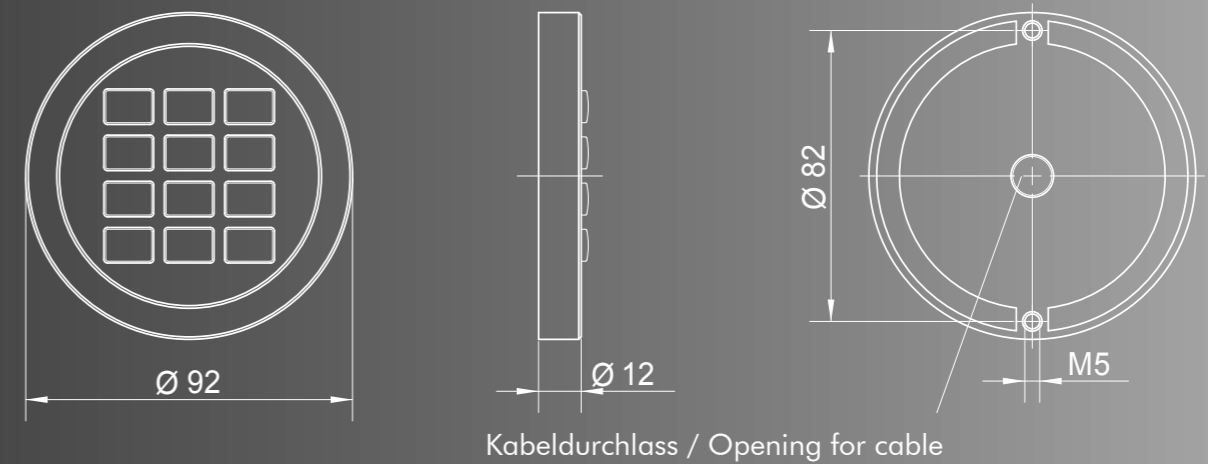


KEYPAD

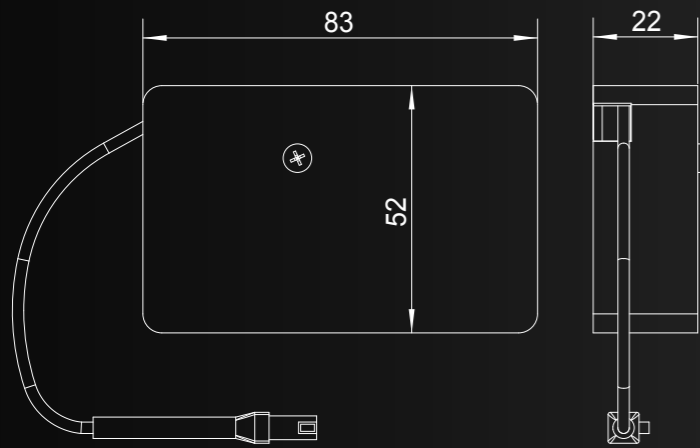
PRIMOR 3100



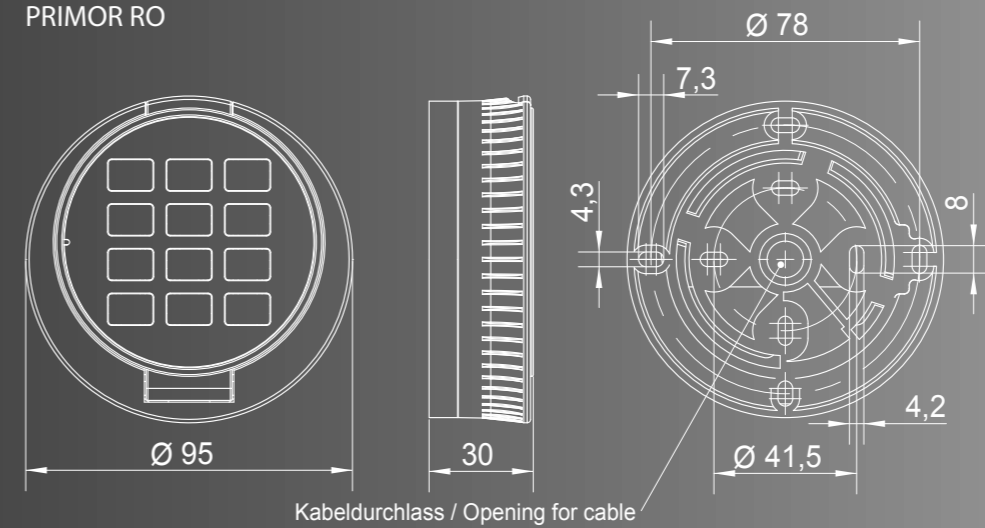
PRIMOR FL



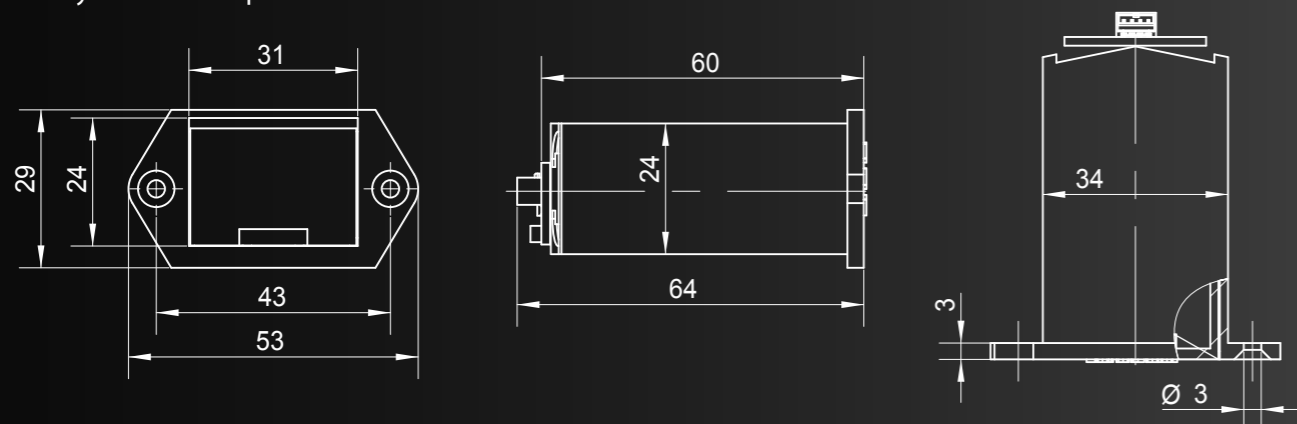
Battery compartment



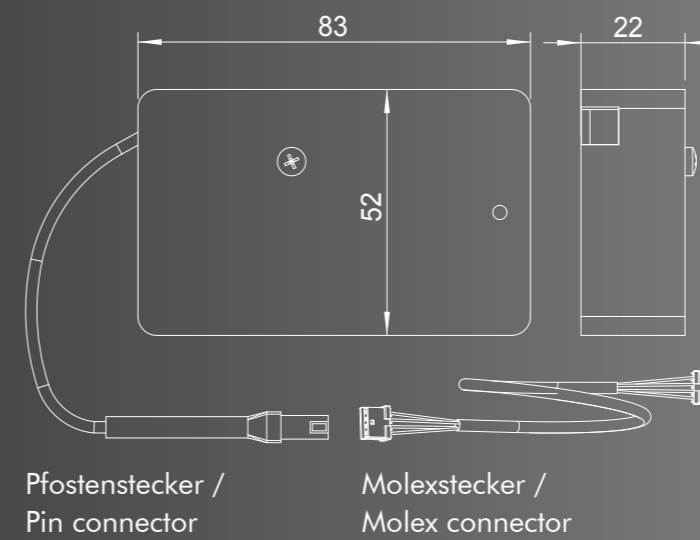
PRIMOR RO



Battery slide-in compartment



PrimorSignal



PRIMOR RE

