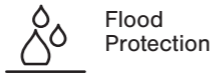


Kronos Security Doors



Flood Protection



Fire Rating

- High security steel doors
- Independently tested and certified to LPS1175 SR2 - SR4
- Optional 240 minutes fire rating*
- Optional flood protection
- Insurance approved by the AiS
- Built to a Police Preferred Specification - Secured by Design
- Suitable for use in any high security environment including; banks, utility sector, retail outlets, jewellers, government, defence buildings and airports
- Custom made to fit your property size and operational requirements
- Inward or outward opening door leaves
- Single or double door sets
- Variety of locking options and optional fittings
- Available in almost any RAL colour**
- 10 year anti-rust warranty



LPS1175: Issue 7
Cert No: 1000 a



Locking Options



Single Key

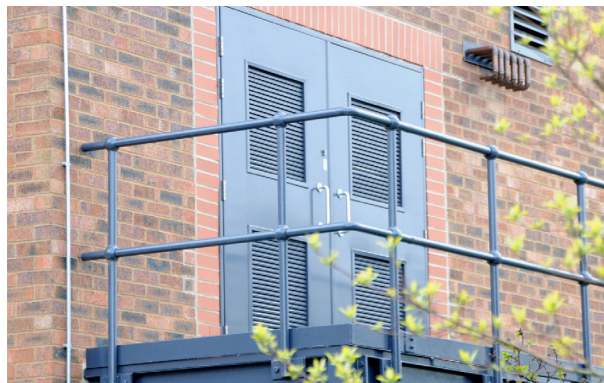


Pin



Biometric

*max 60 minutes with vision panels
**some colours are at an additional cost



Variant	Min Height	Max Height	Min Width	Max Width
SR2				
Single inward opening	1000	2930	600	1430
Double inward opening	1000	2930	900	2600
Single outward opening (with removable over panels)	1000	3930	740	1430
Double outward opening (with removable over panels)	1200	3930	900	2600
Single outward opening	1000	2930	600	1430
Double outward opening	1000	2930	900	2600
Single outward opening (with fixed side and over panels)	1000	3930	740	4180
Double outward opening (with fixed side and over panels)	1200	3930	900	5200
SR3				
Single outward opening	1000	2930	600	1430
Double outward opening	1000	2930	900	2600
Single inward opening	1000	2430	600	1430
Double inward opening	1000	2430	900	2600
Single outward opening (with fixed side and over panels)	1200	4125	600	1430
Double outward opening (with removable over panels)	1200	4125	900	2600
SR4				
Single outward opening	1000	2930	600	1430
Double outward opening	1000	2930	900	2600
Single inward opening	1000	2430	600	1430