



Safety cabinet

Combi-Line

Cash: £4,000 / €5,000 Valuables: £40,000 / €50,000

Fire rating: 30 minutes



Secured by Design



Police Preferred Specification

CL 410 – CL 460 Safety cabinets



SECURITY LEVEL S2

FIRE RESISTANCE GRADE LFS 30

- safety cabinets with pan-European certification
- type tested and supervised security by ECB-S
- tested and certified protection against burglary and fire
- security level S2 according to DIN EN 14450
- fire resistance LFS 30 according to EN 15659 – 30 minutes fire protection for paper
- fire protective material according to DIN 4102
- composite insulation in front of the door leaf provides heat protection for the lock and bolts
- double-walled construction
- internal hinge
- lateral locking through 25 mm diameter strong round bolts plus sliding bolt on the top
- all-over gripping rail on the hinge side
- prepared for both wall and floor fixing, two diagonally arranged drill holes on the back wall and on the floor
- supplied with M10 fixing bolts
- body and door dark grey
- included shelf is fully adjustable (additional available to order)

2 security standards in one safe

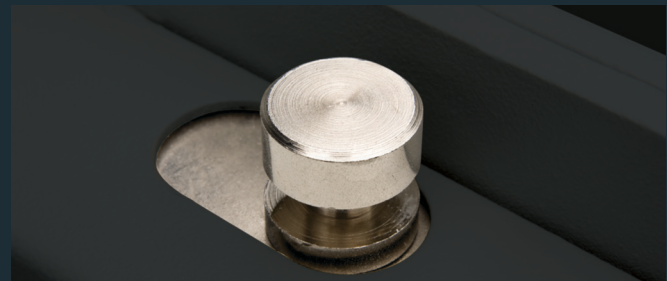
The Combi-Line safety cabinets correspond to 2 security standards:

- security level S2 according to DIN EN 14450
- fire resistance LFS 30 according to EN 15659 – 30 minutes fire protection for paper



Technical features

Sliding bolt on the top for additional protection against attack



SecuTronic

New electronics with graphic display

- ECB-S certified safe lock according to EN class A
- programmable electronic combination lock
- 1 programmable admin code and 1 programmable user code
- 1,000,000 different codes possible



Safety cabinet

Combi-Line ★★★★★

Cash: £4,000 / €5,000 Valuables: £40,000 / €50,000
 Fire rating: 30 minutes



Version K "SecuSafe"

Armoured security double-bit lock

- VdS tested, class 1
- ECB-S certified according to EN 1300 class A
- 9 levers
- 1,000,000 different closures
- supplied with 2 keys



Art.-No.	EAN	Exterior H x W x D	Interior H x W x D	Door H x W	Weight	Volume
	40 03482...	mm	mm	Opening mm	kg	l
CL 410 K	41180 3	320x435 x380	205x320 x232	205x265	44	15
CL 420 K	41200 8	360x495 x445	245x380 x297	245x325	55	27
CL 440 K	41220 6	560x495 x445	445x380 x297	445x325	77	50
CL 460 K	41240 4	820x495 x445	694x380 x297	694x324	111	78



Version E "SecuTronic"

Programmable electronic combination lock

- ECB-S certified according to class A
- 1,000,000 different codes possible
- 1 programmable admin code and 1 programmable user code
- incl. 4 Mignon LR06 AA batteries
- CL 410–440: locking armature protrudes 13 mm
- CL 460: locking armature protrudes 11 mm



Art.-No.	EAN	Exterior H x W x D	Interior H x W x D	Door H x W	Weight	Volume
	40 03482...	mm	mm	Opening mm	kg	l
CL 410 E	41190 2	320x435 x380	205x320 x232	205x265	44	15
CL 420 E	41210 7	360x495 x445	245x380 x297	245x325	55	27
CL 440 E	41230 5	560x495 x445	445x380 x297	445x325	77	50
CL 460 E	41250 3	820x495 x445	694x380 x297	694x324	111	78

Safety cabinet

Combi-Line ★★☆☆

Cash: £4,000 / €5,000 Valuables: £40,000 / €50,000
 Fire rating: 30 minutes

Overview

Four different sizes:



CL410 K



CL420 K



CL440 K



CL460 K



CL 410
Shelves: 1



CL 420
Shelves: 1



CL 440
Shelves: 1



CL 460
Shelves: 1

BURG-WÄCHTER security level



Key blank for Combi-Line CL410-460 K*

Art.-No.	EAN	Info
	40 03482...	
as per sample	38590 6	Keylength 80 mm

* Sparekey production can take up to 14 days.